



**Eesti Nefroloogide Selts**  
ESTONIAN SOCIETY OF NEPHROLOGY



**UNIVERSITY OF TARTU**

# **NATIONAL SOCIETIES' MEETING**

## **Innsbruck, 2015**

*Mai Rosenberg, MD ScDr(med)*

*Tartu, Estonia*



**Eesti Nefroloogide Selts**  
ESTONIAN SOCIETY OF NEPHROLOGY

# Outline

- **Introduction, background information**
- **ESN recent activities**
- **CKD prevalence study in Estonia**



**Eesti Nefroloogide Selts**  
ESTONIAN SOCIETY OF NEPHROLOGY

# Outline

- **Introduction, background information**
- **ESN recent activities**
- **CKD prevalence study in Estonia**



**Eesti Nefroloogide Selts**  
ESTONIAN SOCIETY OF NEPHROLOGY

## **Estonian Society of Nephrology (est. 1994)**

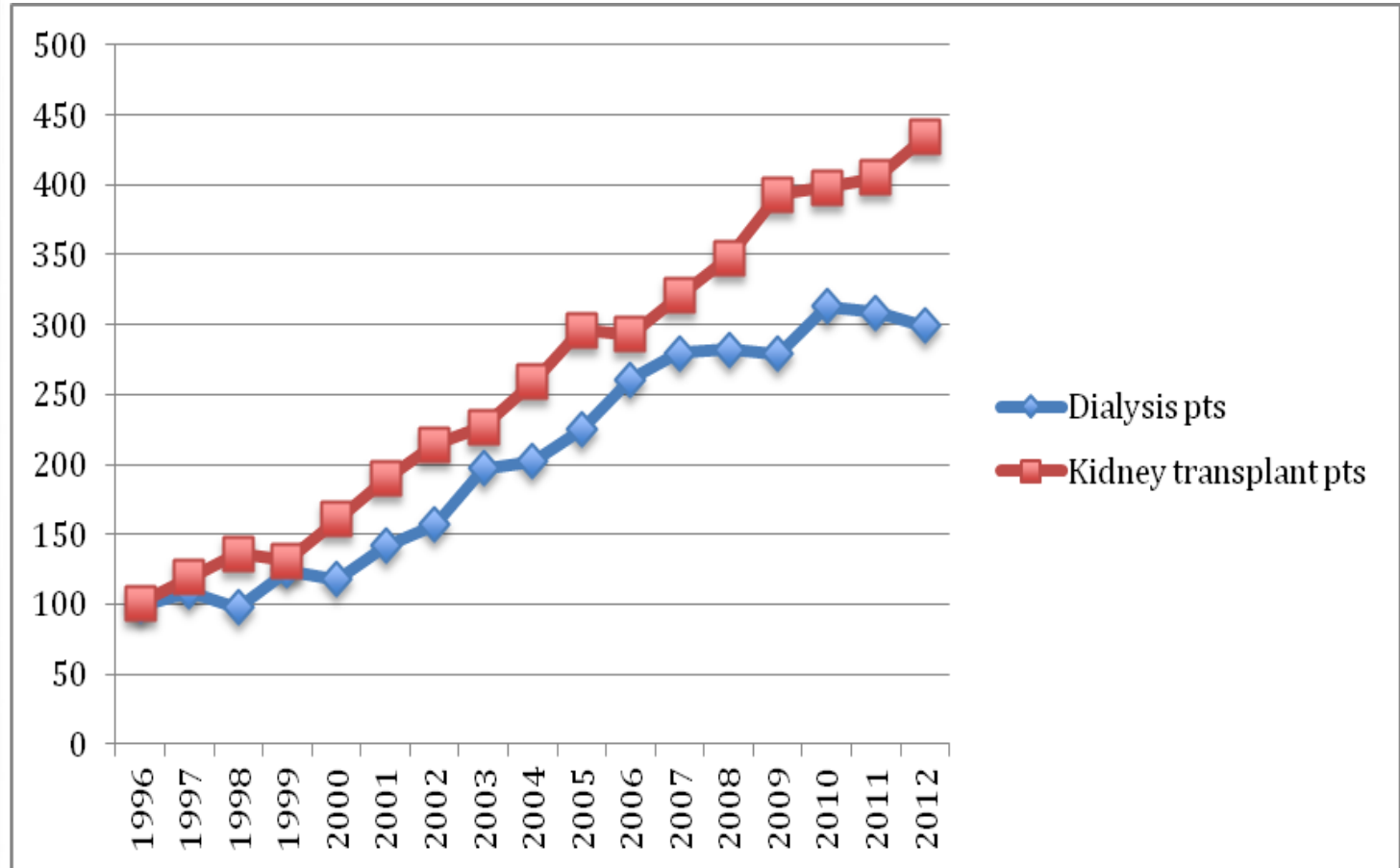
- **Members – 27 > 30: nephrologists – 16 > 17 (12 pmp)**
- **Residency in nephrology started in 1995 at Tartu University**
- **Annual World Kidney Day celebrations**
- **Baltic collaboration since Riga and Tartu conferences in 1992 and 1995 supported by ISN and ERA-EDTA, and, regular biannual Baltic (Estonia, Latvia, Lithuania) nephrology conferences continue: 2014 – Lithuania, Dubinginiai**
- **ESN is EKHA member 2014**
- **RRT epidemiology data collection from 1992 and registry development and annual reports from 2009**
- **Participation in ERA-EDTA Registry NephroQUEST project 2007-2010**

• [www.nefro.ee/eng/](http://www.nefro.ee/eng/)

• *Rosenberg M, Luman M, Ilmoja M. “CKD – important public health issue” Public Service Review Europe 25, 2013, p. 217*



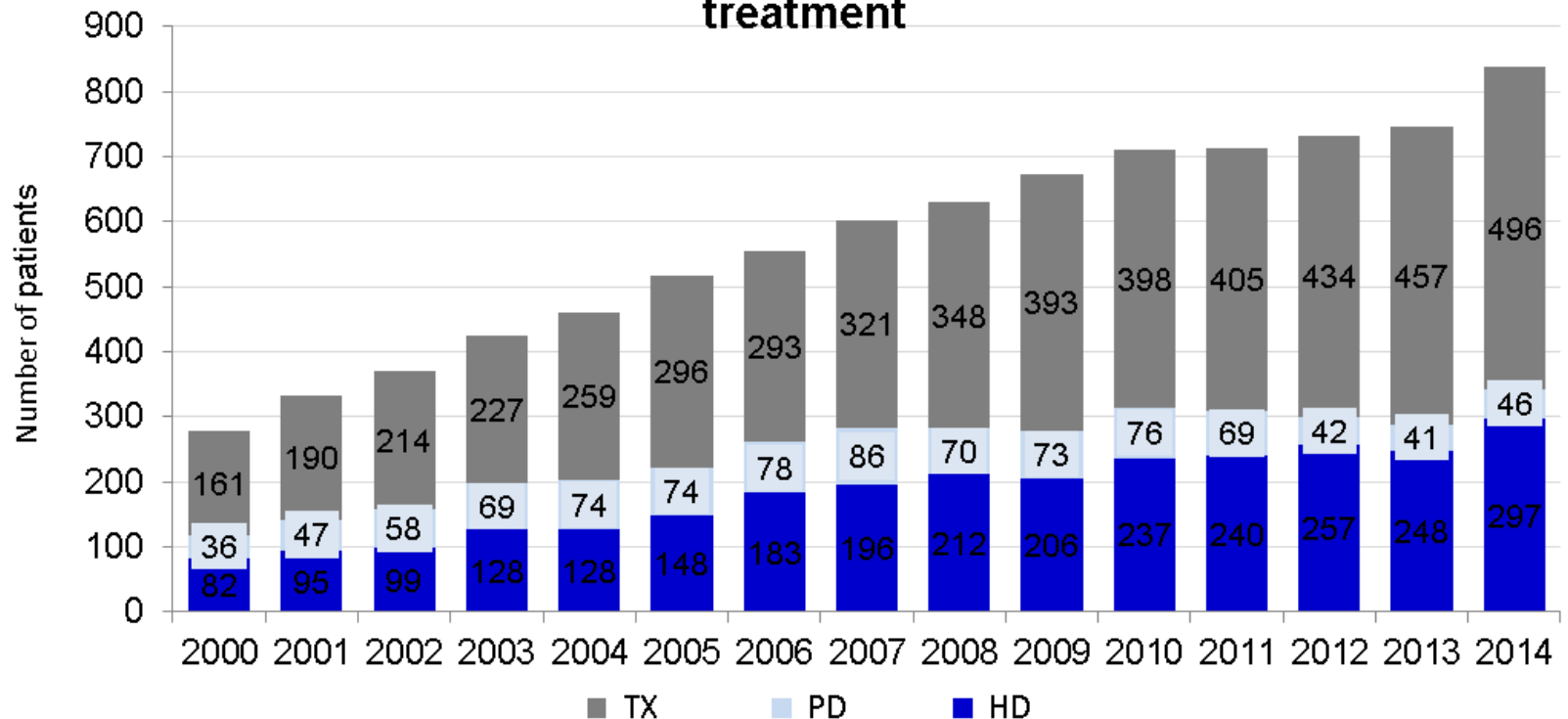
# RRT prevalence trends





# RRT prevalence trends

RRT trends in Estonia 2000-2014 according to modality of treatment





**Eesti Nefroloogide Selts**  
ESTONIAN SOCIETY OF NEPHROLOGY

# Kidney health problems/inequalities

- Ageing population
- Density of inhabitants of a given area
- Expenditure on social protection of GDP



**Eesti Nefroloogide Selts**  
ESTONIAN SOCIETY OF NEPHROLOGY

# Outline

- **Introduction, background information**
- **ESN recent activities**
- **CKD prevalence study in Estonia**





# ESN recent activities

- RRT epidemiology data collection continues + collection of CPIs
- Predialysis patients inclusion to renal registry (2015)
- CKD guideline development for GP (2014-2015 - **2016**)
- Regional (Baltic, Nordic?) CME course organization (ERA-EDTA registry epidemiology course) 2016 – **waiting acceptance**
- **Rare diseases project 2015 – Fabry disease screening**
- **Collaboration with Tartu and Oslo University – : Estonia and Norway governmental grant 2015-2016 – CME courses (transplantation, staff exchange)**
- CKD prevalence study



**Eesti Nefroloogide Selts**  
ESTONIAN SOCIETY OF NEPHROLOGY

# Outline

- **Introduction, background information**
- **ESN recent projects**
- **CKD prevalence study in Estonia**



**Eesti Nefroloogide Selts**

ESTONIAN SOCIETY OF NEPHROLOGY

# Aim of the project

- to find the prevalence of CKD in Estonia using albuminuria/proteinuria and eGFR.
- to characterize CKD population (diagnoses, risk factors, education, other)



**Eesti Nefroloogide Selts**  
ESTONIAN SOCIETY OF NEPHROLOGY

# Duration of the project

**January 1, 2015 – December 31, 2016**



## Statistics

- Preliminary statistical analysis (Poisson selection) have done by statistician (Mait Raag) who found that in order to find (20% accuracy) CKD prevalence we need to collect at least 865 person's data.
- Estonia was divided to four regions and 11 family doctors practice sites were found.



**Eesti Nefroloogide Selts**

ESTONIAN SOCIETY OF NEPHROLOGY

## Collaborators

- **Tartu University Hospital,**
- **North-Estonia Regional Hospital**
- **West-Tallinn Central Hospital**
  
- **Tartu University, Public Health Dept.**
- **Tartu University, Internal Med. Dept.**



## What is done 2015

- **Application to the Research Ethics Committee of the University of Tartu**
- **General cost calculation and finding a source of financing the research**
- **Team**
- **Contact with family doctors practice sites**



**Eesti Nefroloogide Selts**

ESTONIAN SOCIETY OF NEPHROLOGY



**Thank you for your attention!**